



Saltford C of E Primary

WELCOME TO OUR SCHOOL

The logo for Futura Learning Partnership. It features the word "Futura" in a teal, sans-serif font. Above the letter 'u' is a small, purple, globe-like icon. Below "Futura" is the words "Learning Partnership" in a smaller, purple, sans-serif font.



Vision and Values

Our core values are:

Respect

Honesty

Kindness

At Saltford School we know that children have the right to be provided with a creative, innovative and exciting education that will inspire them to become lifelong learners who are enthusiastic and proud of everything they do. We want every child to excel in all aspects of their learning within an immersive, imaginative, expressive and inclusive environment. We want children to become confident discoverers, explorers and creators who live our Christian values.

We keep children as the focus of everything we do.



The History of Saltford School

The first school in Saltford was founded in the middle of the 19th Century. It was called Queen's School and was held in the building which is now St Mary's Church hall. This was a Church school and our links with St Mary's Church remain close and important.

At first there was just one class in this school but, when numbers reached 108, a second class was started! Attendance was not always good. This was especially so in the summer when many children would need to help their families with the harvest in what was still a very rural community.

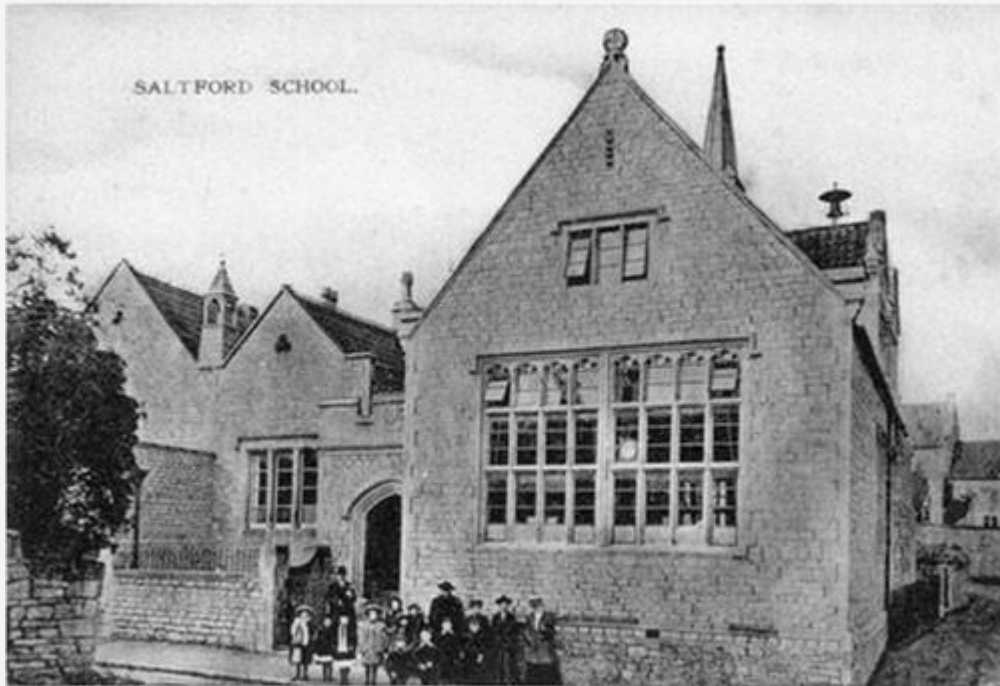
The early curriculum was mainly grammar, spelling, arithmetic and geography. Photographs from the early 20th Century show a uniform of pinafores for the girls and Eton collars for boys.

By 1960 the old building was becoming too small for the growing numbers of children and the infants were relocated to Ellsbridge House. Our current school building was built in 1962 but the four 'temporary' classrooms erected the following year remained in use until our new extension was opened in 2017.



Some historic photos of old Saltford School

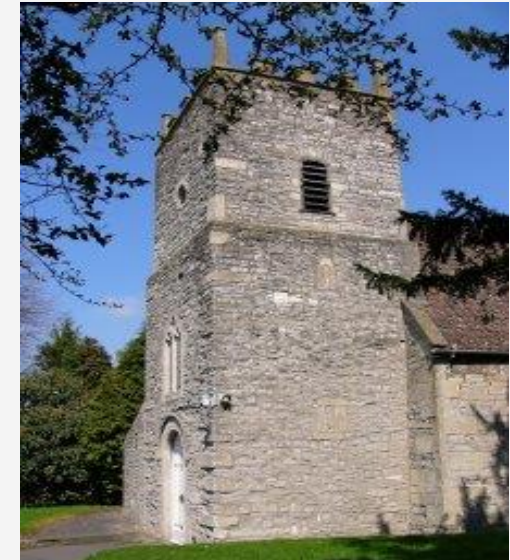
These photos were taken in the early 1900s





St. Mary's Church

Dating from Norman times, St. Mary's Church is at the heart of our community and is closely linked with Saltford School. Every class visits the church and Reverend Daile regularly joins us at Saltford School for our collective worship and festivals.





Our place in Futura

We are really lucky to be part of Futura Learning Partnership. It helps us in many ways. We have enjoyed doing things with or at other schools like sports activities and science lessons. Our teachers work together to help make learning better for all of us.




Futura
Learning Partnership



A Day in the Life of a Pupil



In the morning we have our English and Maths lessons



We enjoy our playtimes with lots of space and equipment.



In the afternoon we do our foundation subjects



Every day we eat our lunch in the hall.



School Ends



School Starts





Saltford School Grounds



This is
our
Active Zone



We are lucky to have our own
swimming pool on site.



Once upon a time, Saltford School looked like this. We now have an endless choice of all types of play, supported by thoughtful playground art, challenging climbing frames, sheltered areas such as the beach hut and the ark. We have a "Playpod" which is full of resources for imaginative play and a "Huff 'n' Puff" shed that gives the children access to games equipment.



Saltford School Grounds



We love our sandpit



We have lessons outside when the weather is nice.



We are lucky to have two fields.

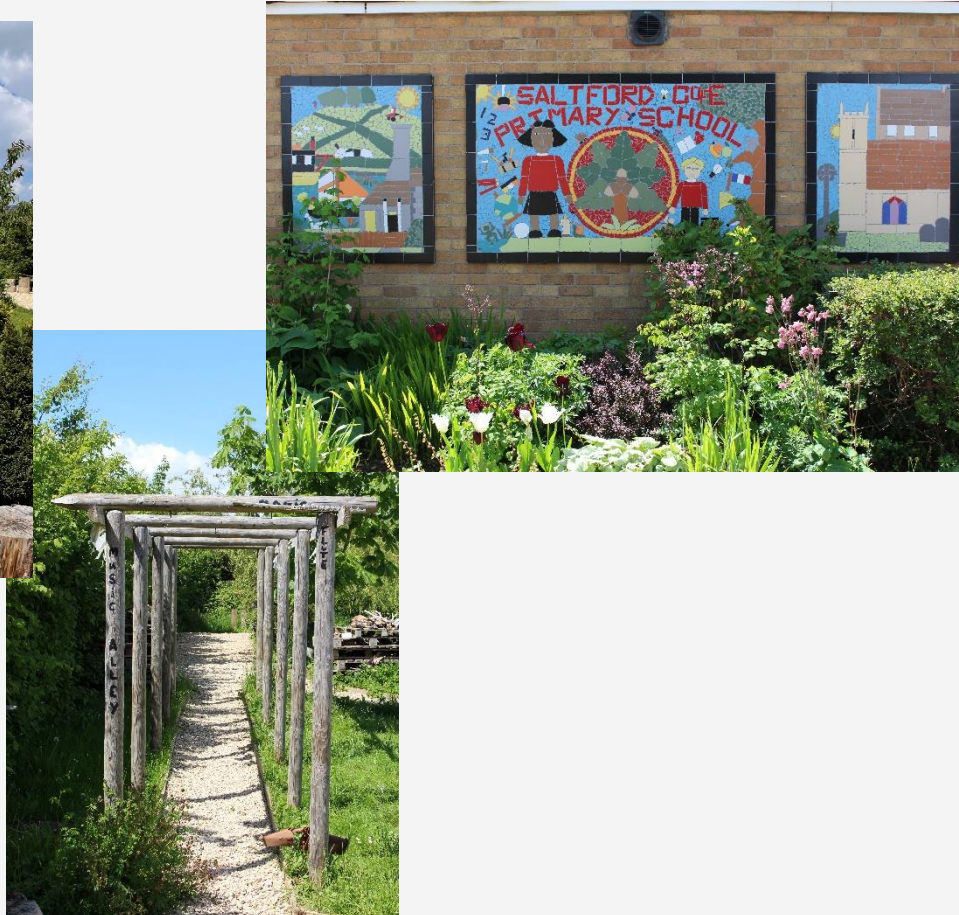




Saltford School Grounds



Our Secret Garden.



We can ride to school and park our bikes and scooters safely.





Saltford School Grounds



There are separate, well-furnished play areas for our younger pupils.

EYFS children have a dedicated play area full of choices, including a lovely bike track and a large sand pit.

There is also The Bug Room which is very different from other areas of the school. This is a quiet, calm, sensory room for our youngest children.





Our curriculum

We learn about many different subjects at school, as well as having some special weeks when we have an important focus to think about. We are lucky to enjoy lessons in art, citizenship, computing, design and technology, English, geography, history, maths, music, PE, PSHE, RE, Science and (in KS2) French.





Our Topics

We study many different and exciting topics at Saltford School. Here are a few:





Subjects we learn about in EYFS

In EYFS we learn about lots of different things!

We do Phonics and Maths every day.

We also learn about staying healthy, being a good friend and do lots of creative jobs.

Some of our topics include: The Sea, Harvest and Farming and Dinosaurs!





People who help us at school

We are so lucky to have many skilled teachers and TAs who help us at Saltford School.

We also have many volunteers from our local community such as parents or grandparents who come into school and help us – especially with swimming and reading.



Playworkers look after us at lunchtime and make sure we have lots of exciting things to do at lunchtime play.



Enhancing learning through educational trips and visitors

From the moment children enter EYFS until they leave Year Six, they are exposed to a variety of experiences and visits, helping to bring learning to life.





Camp

At Saltford we go on camp in Year 4 to Barton Camp (1 night), Year 5 to Mill on the Brue (2 nights), and Year 6 to Okehampton (4 nights).





Music at Saltford

At Saltford, we take great pride in our music, singing and productions. Here is a few pictures:





School life

At Saltford School, we give all our children the opportunity to be involved in many different clubs and teams.

These include:

- **School Council:** our school council plays a very active role in the life of Saltford School ensuring that the children's views are shared and acted upon. Two representatives from each class (Year 1 to Year Six) are chosen by the children in September. They attend meetings either jointly or as separate Key Stages with Mrs Spicer.
- **House System:** our House system plays a very active role Saltford life and it allows children to develop their leadership skills. A Captain and a Deputy for each house are voted on by the children every year.
- **Green Team:** green team is full of people who are interested in looking after the environment and growing things and who like being outdoors.
- **E-team:** E is for equality. We have established an E-team to ensure that everyone is treated equally and fairly, and no-one is left out or discriminated against.
- **Digital Leaders:** Digital leaders support ICT and computing across the school and in the community.





Saltford Sport

Our focus in Physical Education (PE) is to provide every pupil with the opportunity to develop his/her capabilities to the full, which in turn leads to the development of positive attitudes to taking part in physical activity.

This has implications on their feelings, attitudes and learning throughout the curriculum and providing the opportunity for cross-curricular work.

Through the medium of PE, children gain knowledge about the body and how it works and responds to exercise. They learn principles of movement and understand about how and why activity is undertaken.





Saltford Sport

Through the use of our Sports Premium Grant for the academic year which is used, in line with government policy, to encourage the development of healthy, active lifestyles and to make additional and sustainable improvements to the quality of PE and sport that we offer.

We use this for...

- All pupils have access to high quality PE provision
- Are given the opportunity to participate in a range of extra-curricular sports clubs
- Taking advantage of our links with Wellsway School to increased participation across all sports and activities.
- All pupils have at least 30 minutes of daily physical activity.



We have a range of different clubs at Saltford School!

Basketball



Digital leaders



Netball



Choir



Recorder club



Here are just some of the clubs we enjoy.

Gymnastics



Football



British Values



At Saltford we are very proud of the diverse range of activities on offer which promote the British values of democracy, the rule of law, individual liberty and mutual respect, and tolerance of those with different faiths and beliefs.

We are an inclusive school where everyone is welcome!



Thank you for your interest!
